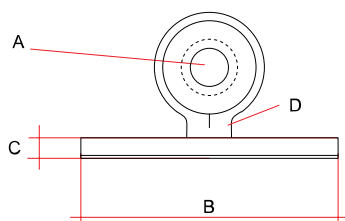


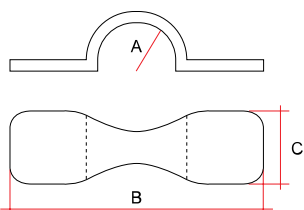
# ROPEYE Stick-on range

Ropeye Stick-On range is designed as fittings for inside and outside use to organize lines, wires and other equipment without the need to drill holes for installation.



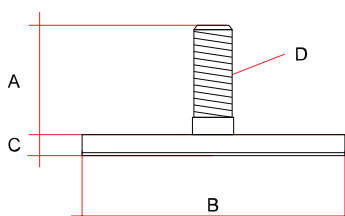
## Ropeye Stick-On Ring

	A Ring dia mm	B Pad dia mm	C width mm	D Rope dia mm	Weight g	Max Breaking Load / kg	Safe Working Load / kg	Material
<b>Stick-on Ring 7-10</b>	10	50	4	3	17	100	50	Carbon / Alu
<b>Stick-on Ring 10-14</b>	14	50	4	3	23	150	75	Carbon / Alu



## Ropeye Stick-On Eyestraps

	A Radius mm	B Lenght mm	C width mm	Weight g	Max Breaking Load / kg	Safe Working Load / kg	Material
<b>Stick-on eyestraps</b>	8	50	14	2	35	25	Carbon



## Ropeye Stick-On Bolt

	A Lenght mm	B Pad dia mm	C width mm	D Screw dia mm	Weight g	Max Breaking Load / kg	Safe Working Load / kg	Material
<b>Stick-on Bolt</b>	15	40	4	M6	8.2	100	50	Carbon / Alu

## INSTALLATION

Prepare the installation area by sanding the surface. Clean the sanded installation area with acetone to remove dust and grease. Apply Sikaflex 291i or other adhesive to the peel ply area of the product. Apply pressure to secure the product to the installation area. Wait 24 hours before putting any load on the product.

## ATTENTION

- PRODUCTS MUST ALWAYS BE GLUED TO A CLEAN SURFACE
- IF YOU WANT AN OPTION TO REMOVE THE PRODUCT AFTERWARDS, USE SIKAFLEX OR OTHER FLEXIBLE GLUE
- FOR A PERMANENT BOND USE A RESIN BASED ADHESIVE
- DO NOT EXCEED SAFE WORKING LOAD

IF YOU NEED ANY HELP ON INSTALLATION SEND AN EMAIL TO:  
SALES@ROPEYE.COM

ROPEYE PRODUCTS HAVE A 2 YEAR WARRANTY



www.ropeye.com