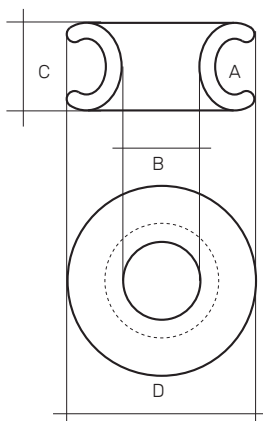


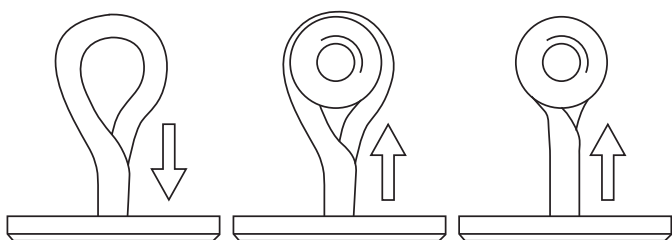
# ROPEYE SLR

Ropeye Self-Locking aluminum Rings are designed to lock rope inside the channel. Ropeye Self-Locking Rings can be used for both single and double braid ropes.



SLR B-A	A Outside mm	B Inside mm	C Width mm	D Ring mm	Weight g	Max Breaking Load kg	Safe Working Load kg	Material
SLR 7-10	7	10	11	24	5	800	520	Aluminum
SLR 10-14	10	14	15	34	13	1600	1040	Aluminum
SLR 14-20	14	20	20	46	30	3200	2080	Aluminum
SLR 20-28	20	28	31	69	105	6400	4160	Aluminum
SLR 28-38	28	38	44	99	325	10000	6500	Aluminum

## INSTALLATION



Stretch the loop open and slide in the SLR. Close the loop to lock the SLR in place.

## ATTENTION

- DO NOT EXCEED SAFE WORKING LOAD

IF YOU NEED ANY HELP ON INSTALLATION SEND AN EMAIL TO:  
SALES@ROPEYE.COM

ROPEYE PRODUCTS HAVE A 2 YEAR WARRANTY



www.ropeye.com